

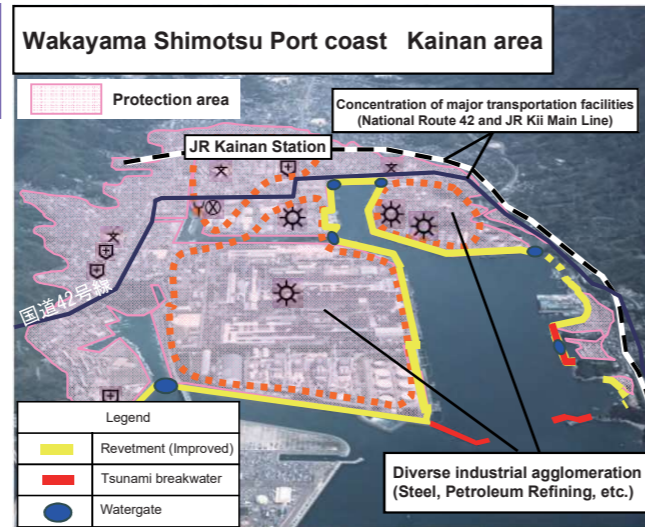
# Ports, Harbors, and Airports

## Safety of the People, Guarantee of Security

Promotion of the Nankai Trough earthquake countermeasures, etc. Tsunami countermeasure at the Shimotsu Port coast (Kainan area) in Wakayama prefecture

In the tsunami inundation prediction area in Kainan City, Wakayama Prefecture, administrative and disaster prevention center functions, and manufacturers of high-value-added products are gathered.

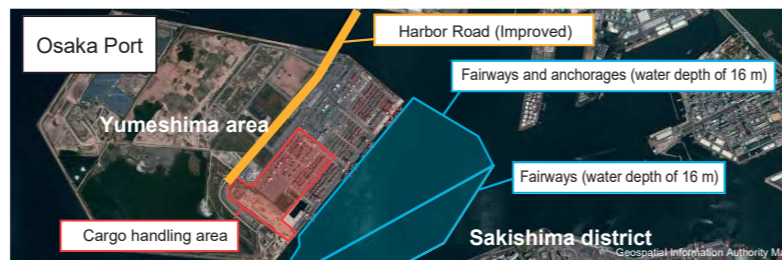
For this reason, we are implementing the improvement of coastal conservation facilities (including raised embankment works) for the protection of these facilities as well as human life and property against large-scale earthquakes, such as the predicted Nankai Trough earthquake.



## Ensuring economic and social activity recovery and accelerating and expanding the economic virtuous cycle

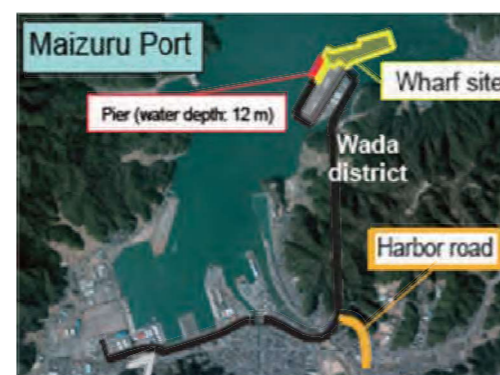
### Function enhancement of international container strategy port "Hanshin Port"

The world of maritime transportation and ports/harbors is changing as shipping companies further reorganize their alliances and narrow down their ports of call, and AI, IoT, and other telecommunications and automation technologies rapidly progress. In this context, Japan is working to both improve its industrial competitiveness and maintain and improve employment and incomes for Japanese people by continuously implementing a strategic international container port policy that integrates both "hard" and "soft" elements.



## Creating prosperous and energetic regions and decentralized nation building

In addition to responding to the increase in cargo demand and ship size due to business location and capital investment, we will promote the development of international logistics terminals, such as the development of piers and harbor roads, in order to ensure smooth land transportation.



# Public Buildings

## Safety of the People, Guarantee of Security

Promotion of the Nankai Trough earthquake countermeasures, etc. Strengthening the disaster prevention function of government offices and facilities that will serve as a disaster prevention base

• Upgrading of government offices and facilities that serve as disaster control bases is being promoted in cooperation with the respective regions

Ensuring necessary earthquake resistance for government offices conducting disaster prevention activities after a potential Nankai Trough mega earthquake, reducing environmental impact by about 47%, and as the nation's first "ZEB Oriented" government building complex, developing the Otemae Joint Government Building.



\*Methods for reducing environmental impact include high-performance glass and eco-terraces (load reduction methods), solar power generation (use of natural energy), LED lighting, and large temperature difference air and water distribution (facility system efficiency).

• Ensuring power supply for government facilities

Kyoto Second Regional Joint Government Building's in-house power generation facility renovation

Promotion of infrastructure aging countermeasures for the future Countermeasures for aging of government facilities

• Addressing significant aging parts of existing government facilities

Obama Regional Joint Government Building Exterior wall renovation  
Osaka Customs Nanko Office Sub-branch Water supply and drainage facility renovation

## Promotion of the use of wood

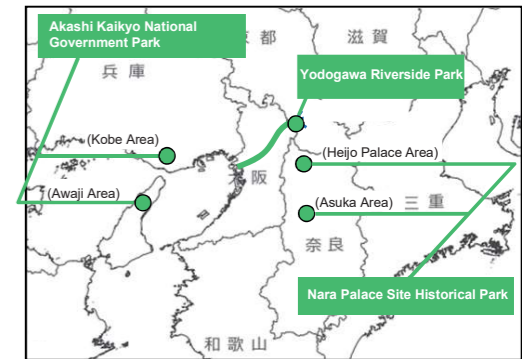


Based on the Act for Promotion of Use of Wood in Public Buildings etc., wood has been actively used for newly constructed buildings and the interior design of public facilities, including Kyoto Gyoen Nakadachiuri Rest House and Japan Coast Guard's general training building.

# Parks

## Creating prosperous and energetic regions and decentralized nation building

### Development of tourism base facilities in national parks



### Nara Palace Site Historical Park (Heijo Palace Area)



Nara City, Nara

People will be guided about the highlights of the entire park, including the figures of the present and bygone days of the Heijo shrine trace.



### Yodogawa Riverside Park



Kyoto and Osaka

In the Searitei Area (Yawata City), people can view the 1.4 km rows of cherry blossom trees from the Observation Tower in spring.



### Akashi Kaikyo National Government Park (Awaji Area)



Awaji City, Hyogo

People can enjoy the scenery of seasonal flowers, including spring tulips, throughout the year.

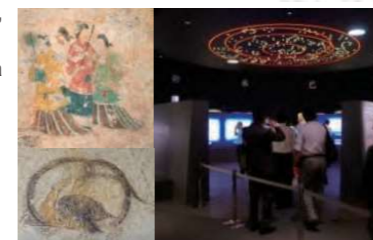


### Nara Palace Site Historical Park (Asuka Area)



Asuka-mura, Takaichi-gun, Nara

People can see a replica of the sarcophagus excavated from an old burial mound and a restored fresco.



### Akashi Kaikyo National Government Park (Kobe Area)



Kobe, Hyogo Prefecture

People can easily experience mountain village life, such as old private houses.

