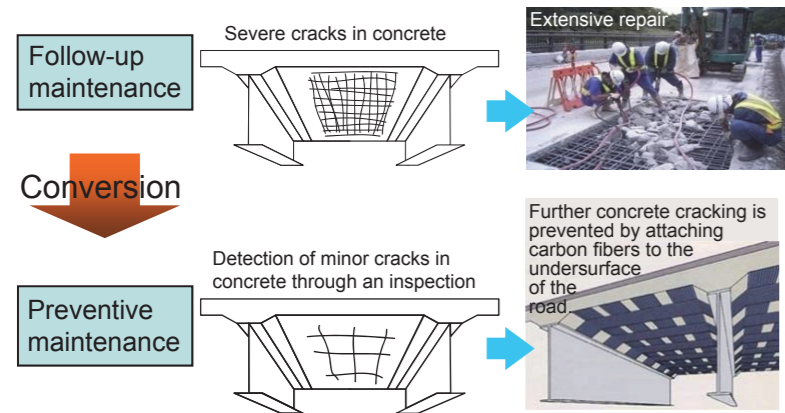


Roads

Ensuring the Safety and Security of the People

Securing flows of goods and people in the event of a disaster

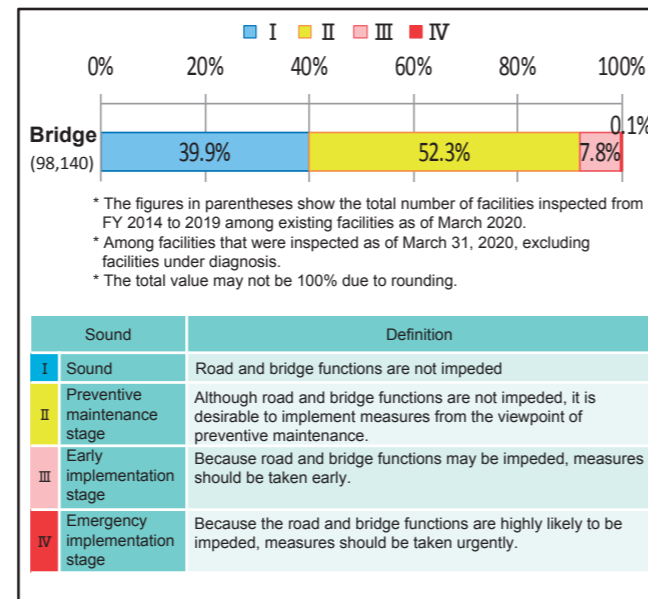
Inspection of road facilities (bridges, tunnels, pavements, slope surfaces, earthwork constructions, road accessories, etc.) to grasp safety continues steadily. Measures against aging by maintenance cycles such as inspections, diagnoses etc. are also promoted.



[Major projects]

- National Route 2: Repair of Tenjin Bridge on
- National Route 42: Repair of Shinkemi Tunnel
- National Route 43: Repair of the Shikanjima Expressway elevated bridge
- National Route 171: Repair of Kuzebashi Bridge (up)

[Inspection status (for all Kinki road managers)]

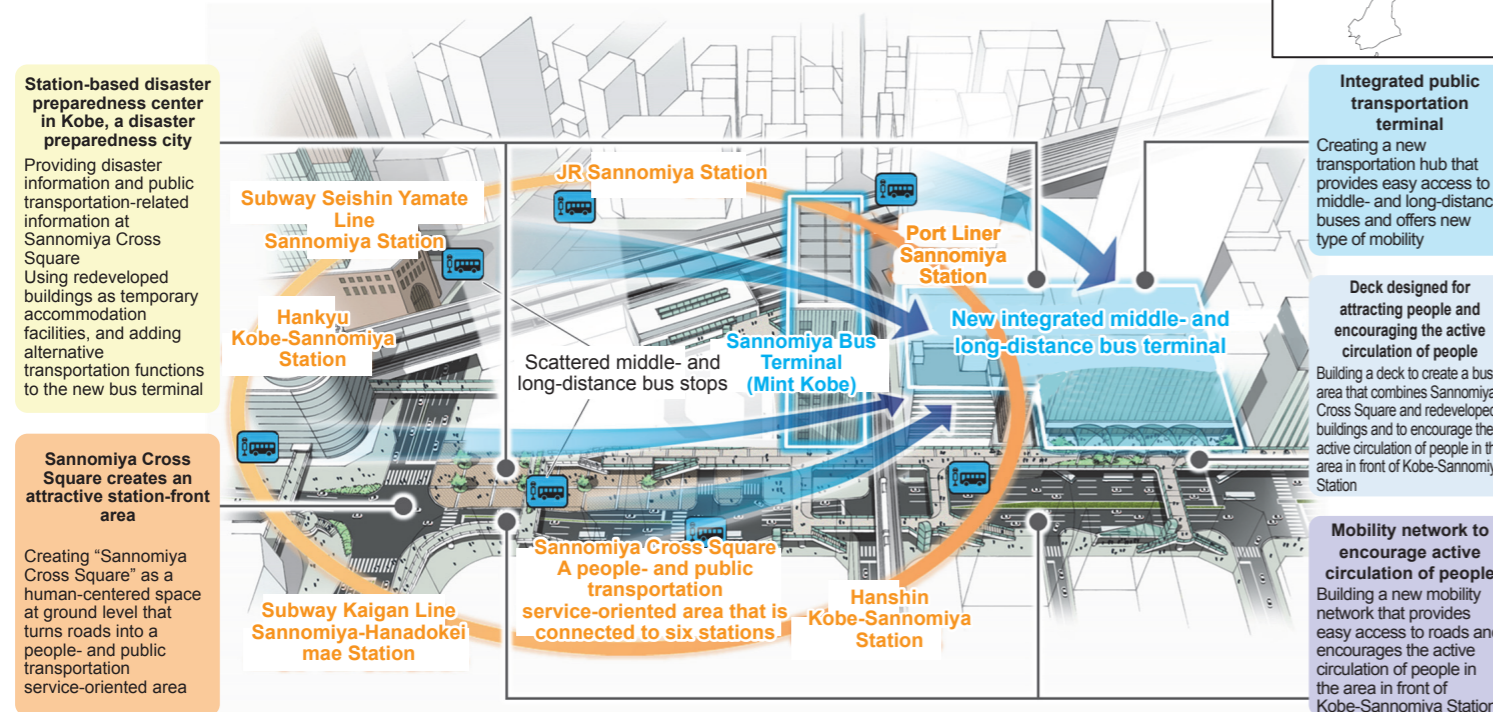


Implementing a bus terminal creation project

- Project to construct a transportation terminal at National Route 2 Kobe-Sannomiya Station

This project, in collaboration with redeveloped buildings (private-sector businesses), aims to create a new integrated terminal for middle- and long-distance buses, thereby improving the transfer and waiting environment, promoting smooth transportation, and enhancing disaster prevention functions.

—Creation of an integrated middle- and long-distance bus terminal that is connected to six stations—



Functions of the Kobe-Sannomiya Station-Front Area (Image)

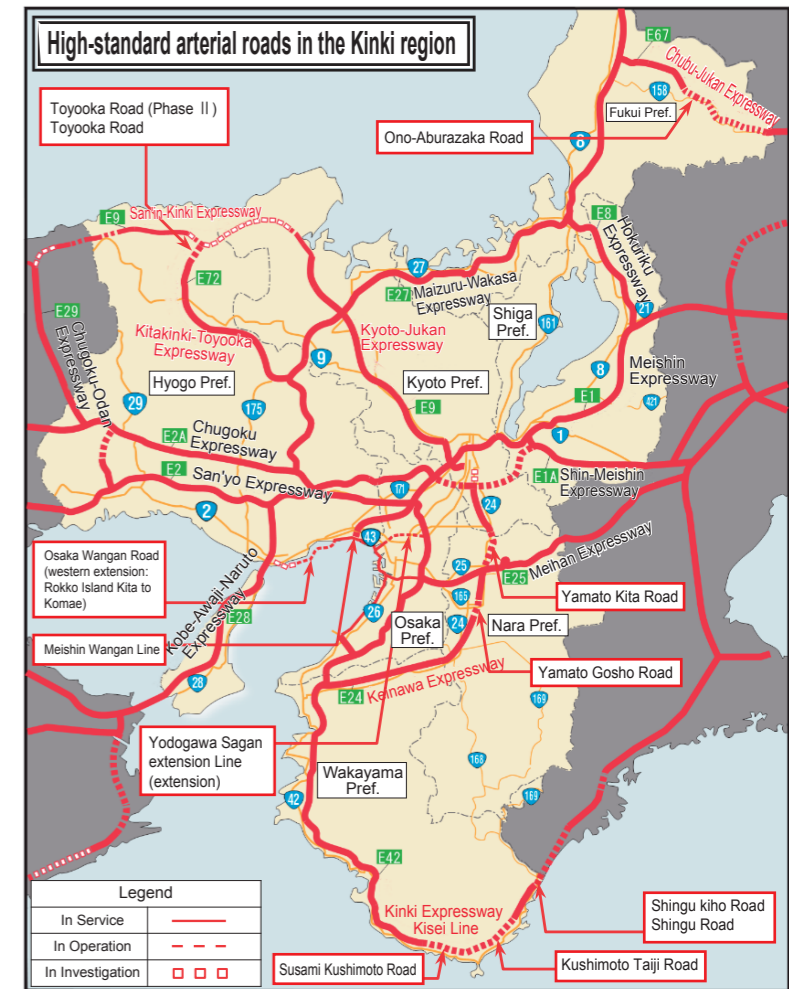
Accelerating Efforts to Boost Productivity and Growth Potential

Strengthening efficient logistics networks

In light of changes in lifestyles during the COVID-19 pandemic, we will promote the development of road networks connecting regions and bases in order to shift from a Tokyo-centralized country to a country with multi-regional cooperation.

[Major projects]

- National Route 24, Keinawa Expressway, Yamato Kita Road and Yamato Goshō
- National Route 42, Kinki Expressway Kisei Line, Susami Kushimoto Road, Kushimoto-Taiji Road, Shingu Road, and Shingu-Kiho Road
- National Route 158, Chubu Jukan Expressway, Ono-Aburazaka Road
- National Route 483, Kitakinki Toyooka Expressway, Toyooka Road and Toyooka Road (Phase II)
- National Route 1, Yodogawa-Sagan Line (extension)
- National Route 2, Osaka Wangan Road (western extension: Rokko Island Kita to Komae)
- National Route 43, Meishin Kaigan Connecting Line



Creating a More Affluent and Livable Community

Road networks that connect communities and hubs

Midosuji in Osaka City, Sannomiya Chuo-dori Street in Kobe City, and Otemae Street in Himeji City were designated by each road manager as "Hokomichi" for the first time in Japan. On each road designated as Hokomichi, we will implement attractive utilization of roads to contribute to the creation of lively atmosphere and revitalization of local areas.