

Safety and Security

Technical Emergency Control FORCE



Implementation of investigation of the disaster situation of collapsed roads (2017 Heavy rain in North Kyushu)



Implementation of investigation of the disaster situation of collapsed rivers (2017 Heavy rain in North Kyushu)



Removal of sediment deposited on road surfaces (2017 Heavy rain in North Kyushu)



Investigation of the disaster situation of collapsed slope locations (2017 Typhoon No.21)



Support to the Local Government (Equipments)



Support to the Local Government (Human Support)



<Main dispatch achievement>	The number of people	The total number of workdays (person, days)
2015 Heavy rain in Kanto Tohoku	35	155
2016 Kumamoto earthquake	128	792
2016 Typhoon 10 (Hokkaido, Tohoku)	44	317
2017 Heavy rain in North Kyushu	68	398
2017 Typhoon 21 (Kinki)	39	55
2018 Heavy snowfall in the Fukui region	39	75

Support for afflicted municipalities

Signed "support at the time of disaster" between Regional Development Bureau and municipalities

An agreement is concluded for quick and smooth dispatch of TEC-FORCE, liaison, and machinery for disaster countermeasures in order to prevent damage expansion and secondary disasters, when a disaster occurred in the area of a local government (municipality) or there is a risk of a disaster.

Cooperation with the construction industry group

Concluded a disaster agreement between the Regional Development Bureau and various organizations

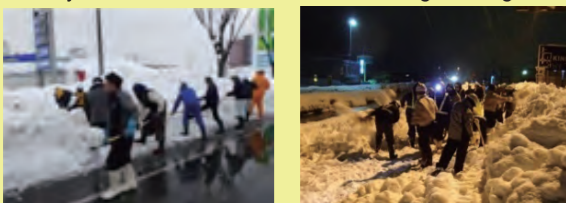
In response to the occurrence or fear of disasters such as Earthquakes, tsunamis, wind and flood damage, an agreement is concluded in order to prepare system in advance, prompt and smooth emergency response immediately after the disaster, and implementation of emergency no-bid contract construction, etc. against occurrence or risk of etc.

Promotion of construction business continuity plan (construction BCP) at the time of disaster

For large-scale natural disasters, secondary disaster prevention, emergency response, early restoration and reconstruction of infrastructure are the most important tasks. For this reason, construction companies, etc. need to take measures to mitigate their damage and to strengthen disaster response capabilities for quick returning to normal operations, and Kinki Regional Development Bureau, with expectation that such efforts will be promoted, implements a construction business continuity certification system in the event of a disaster.

The correspondence results based on the disaster agreement!

■ Snow removal support for the February 2018 Fukui region heavy snowfall
Based on a "Comprehensive Agreement on the Disaster Emergency Procedure Duties and Procurement of Construction Material at the Time of the Disaster", (a company) a total of 131 snow removal workers from the association of construction industry society Kansai Branch in Japan were dispatched. The snow-removal work was carried out by the labor-intensive method for through the night and day.



What is Business Continuity Plan (BCP)?

When a company suffers damage due to a disaster or accident, it is expected to minimize the damage or avoid interruption of the important operations as well as to resume in the shortest possible period. This plan to pursue business continuity is called as "Business Continuity Plan (BCP)."

Current Certified Companies

This system is established from FY 2012 and certified 660 companies with business continuity capability at the time of disaster (as of March 31, 2018).

Crisis management and response for large-scale natural disasters such as the huge earthquake and tsunami of the Nankai Trough

Various training in cooperation with other organizations

In cooperation with administrative organizations as well as disaster prevention organizations such as local governments and public institutions, in order to protect citizens' safety and security from large-scale natural disasters and crisis management events, various kinds of training are implemented.

Disaster Response

With implementation of the daily training, we carry out support for giving a quick response at the time of the disaster and carry out support for the emergency restoration.

Use daily training results

Implemented training of securing traffic routes for emergency vehicles jointly with police, etc.

Training of removing unattended cars (November 8, 2014: Wakayama Prefecture)

Emergency drainage training by pumping cars by TEC-FORCE members

Pump car drainage training (November 8, 2014: Wakayama Prefecture)

For actual disaster response

2016 Kumamoto earthquake

Grasped the disaster situation and provided support for emergency restoration works

- Transmission of the image using the satellite communications vehicle (April 20, 2016)
- Dispatch of lighting car to the emergency restoration site (April 29, 2016)

Typhoon 21 disaster in 2017

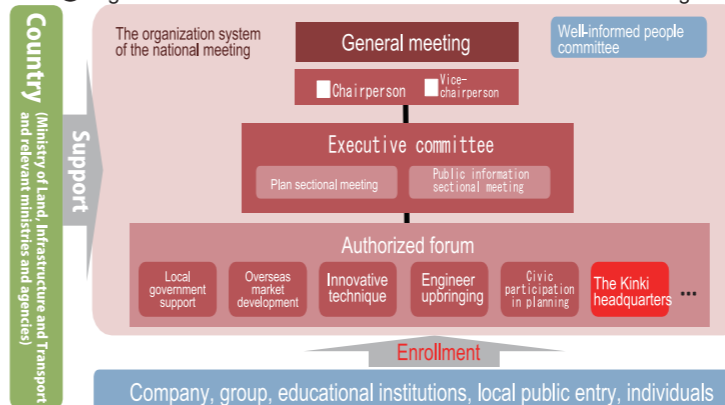
Operation of large-scale drainage in Kinokawa-shi, Wakayama

Drainage of flooded area by pump car (April 29, 2016)

Kinki Headquarters of the Infrastructure Maintenance National Meeting (Started on December 15, 2016)

The Infrastructure Maintenance National Meeting is the organization where various main constituents participate for the social realization that industry-university co-operation public and private sectors work on maintenance in solidarity with the purpose of utilizing infrastructure in a continuously good state. The Kinki headquarters is positioned in the certified forum and applied to problem solution about the infrastructure maintenance where facilities managers are carrying out activities.

Organization of the Infrastructure Maintenance National Meeting



Forum

About the problem of the maintenance of the infrastructure which the facilities manager holds, we plan information sharing with private enterprises, and perform the reporting of the technique to hold it from the private enterprises, so as to be able to perform discussion the problem solution.



In the forum

Pitch event

Suggesting the latest techniques (seeds) that private enterprises hold for the problem (needs) of the facilities manager, we plan technical excavation and social implementation, promotion of cooperation. As a result of the pitch event, we test seeds very likely to be problem solutions that facilities manager have in the field and inspect the technique.



In the pitch event

Example of tests in the field (demonstration experiments)

I want to do a proximity visual inspection of a bridge having difficulty with the use of the tower wagon, setting of the ladder and footing, without long-time suspension of traffic.

Facility manager (Provide needs) Matching

"We can install an inspection road with short suspension of traffic. And we hold a check technology to say that vehicle traffic is possible after installation."
"The inspection road that we set up is movable by human power, and we can approach the damage point easily and check it."

(Provide seeds) Private enterprises etc.



In the demonstration experiment
Confirm the applicability to the conditions, while aiming for further improvement on the points of improvement that were confirmed again.

