

Grants

Revitalizing the economy and region; ensuring safety and security

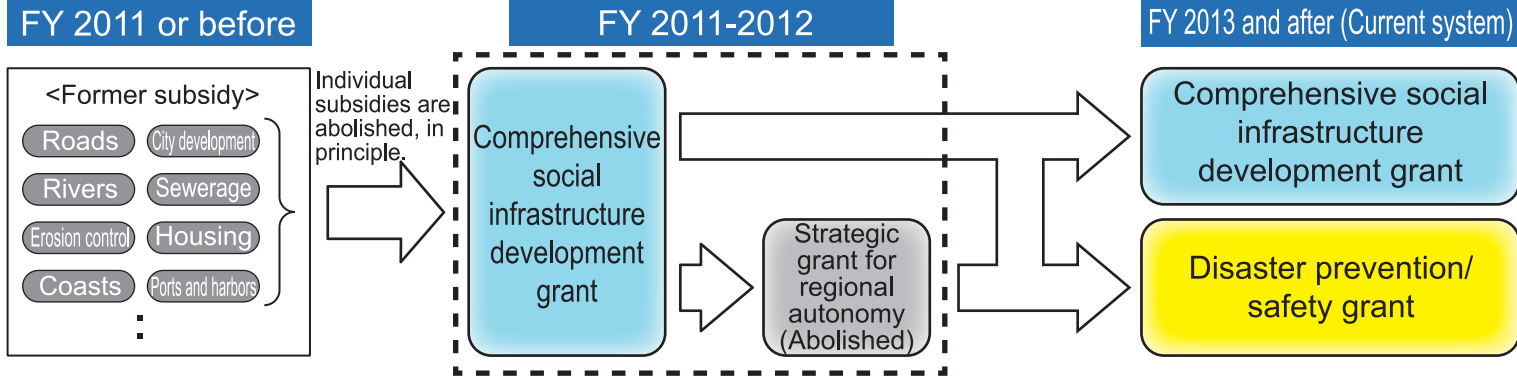
Comprehensive social infrastructure development grant and Disaster prevention/safety grant

Comprehensive social infrastructure development grant

- Established in FY2010 as a comprehensive grant by incorporating subsidies given to local governments under the jurisdiction of the Ministry of Land, Infrastructure and Transport so that local governments can use it more flexibly and freely

Disaster prevention/safety grant

- Established by FY 2012 supplementary budget to intensively support the measures against aging of facilities for protecting lives and livelihoods of local residents, the measures for preventing/reducing disaster, and the measures for comprehensively ensuring living space in the region



Features of both grants (Differences from individual subsidy)

- Administrative procedures which were individually performed per project were unified and standardized.
- Local governments can use national funds within the range of projects positioned as city development plans
- Project of further enhancing the effect of social infrastructure development which serves as the core of city development plan can be performed by making use of the local government's ingenuity.

Introduction of major grant projects (related to urban/housing matters)

Intensive support for comprehensive prevention/reduction of disaster, the measures against aging of infrastructure, etc. in the region

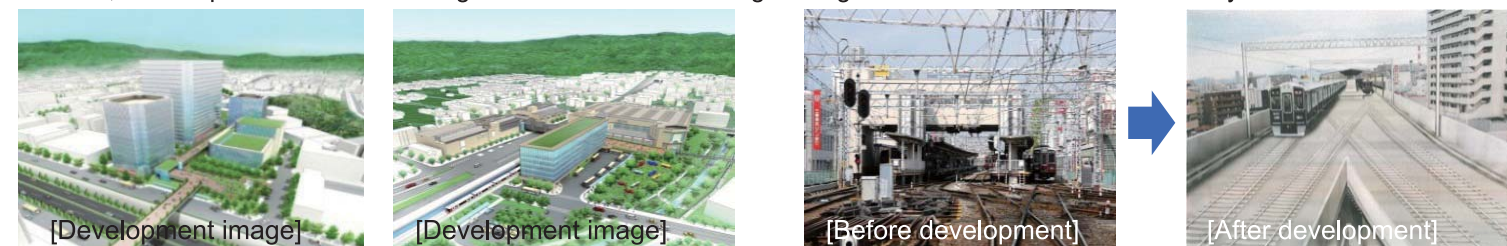
From the viewpoint of promoting the safety/security of citizens through the measures to strengthen the national land, etc., intensive support will be given to the comprehensive disaster prevention/reduction against wind, flood and landslide, large-scale earthquakes/tsunamis which frequently occur, the comprehensive development plan to urgently respond to aging of infrastructure based on infrastructural life prolongation plan.



- Development of the tsunami evacuation facility (Mihama town, Wakayama prefecture)
- Aseismic repair of housing (Osaka Prefectural housing)
- Development of emergency evacuation route (Takaishi City)

Formation of vigorous regions, development of living environment where residents can manage affluent life, and comprehensive social infrastructure development for enhancing competitiveness

From the viewpoint of promoting the revitalization of the economy and region, intensive support will be given to the comprehensive development for which various private and public sectors are involved by utilizing PPP and PFI, etc., or private investment is encouraged, such as development of growth foundation strengthening urban and regional competitiveness, promotion of "compact + network," development of affluent living environments and strengthening of efforts for tourism and industry.

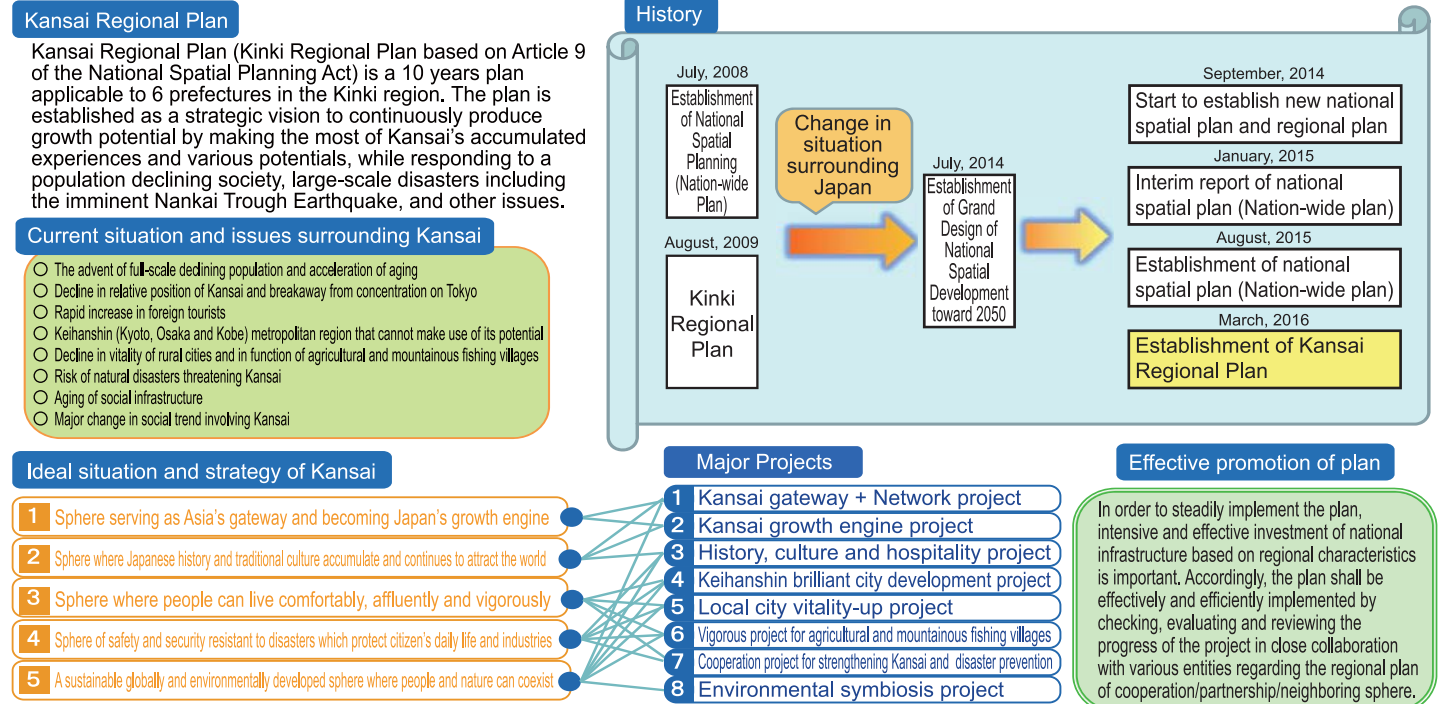


- Concentration of city functions such as medical institutions and community facilities
- Continuous overhead crossing railway project (Osaka City)

Plans

Exchange base with other Asian countries based on history and innovation in order to realize a comfortable and affluent life

Kansai Regional Plan



New approaches

"i-Construction"

Productivity of each worker at construction site shall be improved, the business environment of the company shall be improved and the wage level of people working at construction site shall be increased and safety shall be ensured.

Current situation of productivity at construction site

- Lowered productivity with surplus labor force as background
- Productivity is not improved at construction sites of earthworks etc.
- There are still many labor accidents at construction site.
- Labor shortage is expected due to aging of population.

Approaches

Full usage of ICT technologies

- Three-dimensional measurement using UAV
- Design/construction plan based on three-dimensional data
- Construction using ICT construction machine
- Energy saving of inspection

Standardization

- Improvement in cast-in-place efficiency
- Advancement of pre-casting

Equalization of construction period

- Flexible application of starting period of construction
- Spread and expansion to local governments

(Kinki Regional Development Bureau's PLUS1)

- Facilitation of construction work owing to communication between orderer and order receiver

What to Focus On

- Improve business environment of company by increasing productivity of each worker.
- Make construction site more attractive by increasing the wage level of people working at construction site.
- Aim at Zero fatal accident at construction site.
- Aim at "salary, vacation, hope," instead of "tight, dangerous, dirty"

Strengthening of system of Kinki Regional Development Bureau

Strengthening of system to promote i-Construction

- i-Construction Promotion Headquarters [Chairman-, Director- and Chief-level meeting]
- i-Construction Promotion Secretariat [Official-level meeting of Secretary-General and Head of Planning Dept.] (Established on February 15, 2016)

- Kinki region i-Construction Promotion Liaison and Adjustment meeting (Established on March 22, 2016)

- On-site tour was held for corporate managers. (On March 25, 2016)