

Current Kinki Region Information

Total Length of Protected River ways
 Nationwide Total 88,068.0km
 Kinki Region Total 10,384.6km (11.8%)

Source: Ministry of Land, Infrastructure and Commerce: Water Management; Homeland Security Bureau Protected River ways Total Length Report (Current As of April 30th, 2014)

Maintenance Rate of Directly Controlled Embankments
 Nationwide Total: 66.2%

$\text{Maintenance Rate} = \frac{\text{Current Embankment Length}}{\text{Necessary Embankment Length}}$
 Kinki Region Total: 51.5%

Source: Ministry of Land, Infrastructure and Commerce: Water Management; Homeland Security Bureau: Quality of Directly Controlled River Maintenance Facilities (Current as of 2015)

Total Length of Specified National Roads
 Nationwide Total 23,708.9km
 Kinki Region Total 2,168.1km (9%)

Maintenance Rate
 Nationwide Total: 68.6%

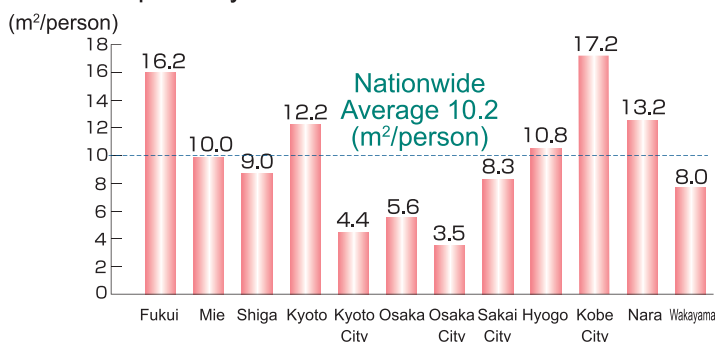
$\text{Maintenance Rate} = \frac{\text{Serviced Total}}{\text{Actual Total}}$
 Kinki Region Total: 61.4%

Source: 2015 Annual Report on Road Statistics

Urban Area Total Land Area
 Nationwide Total: 1,448,003ha
 Kinki Region Total: 254,267ha (17.6%)

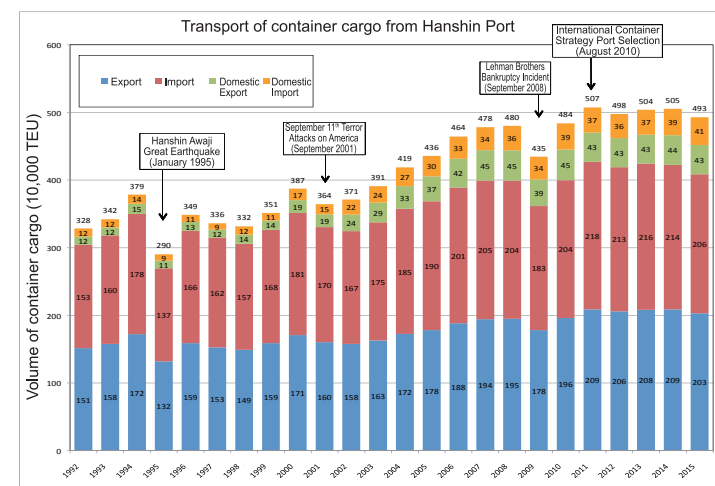
Source: 2014 City Planning Annual Report (Current As of March 31st 2014)

Per Capita City Park Area



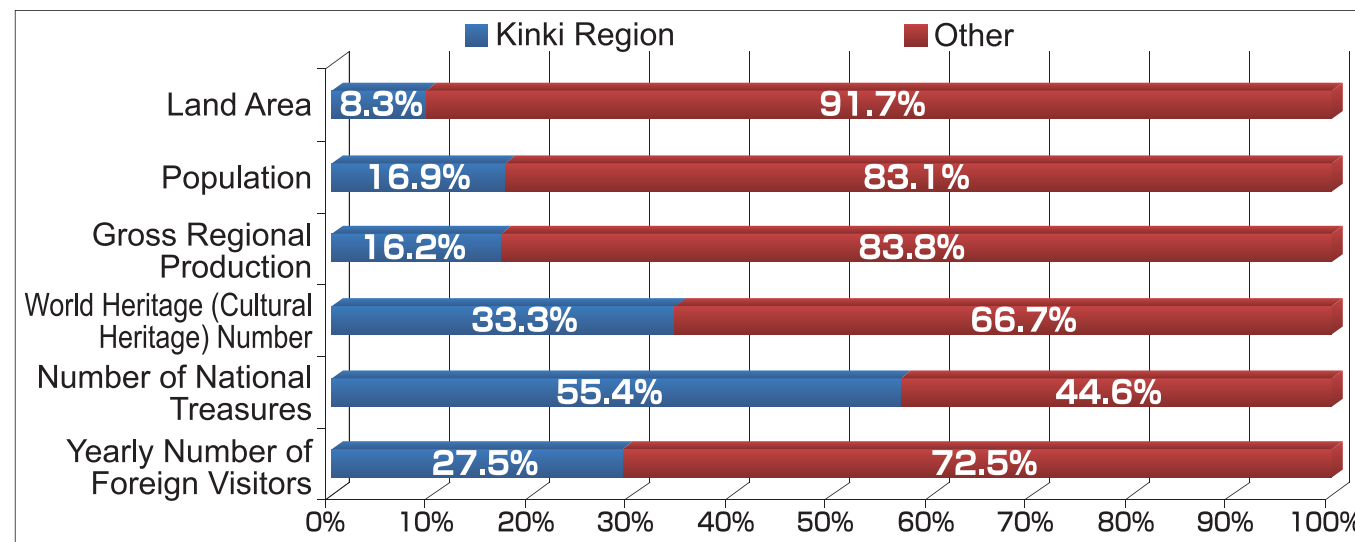
Source: Urban Parks Database; Current As of March 31st, 2015
 ※Does not include government ordinances

Transport of cargo from Hanshin Port



Source: Kinki Regional Development Bureau Investigation

Data that highlights the Kinki Region within Japan



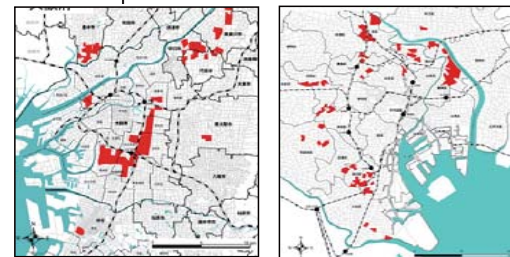
Land Area: Geographical Survey Institute Prefectural Area Report of 2015
 Population: Ministry of Internal Affairs 2015 Census
 Gross Production: Cabinet Prefectural Economic Calculations of 2012
 World Heritage (Cultural Heritage) Numbers: UNESCO Website
 Foreign Visitors per year: Tourism Authority 2015 Foreign Visitor Consumption Trends Survey
 (Each prefecture's visitor number compared to the visitors in the total area of the Kinki Region)

Foreign Countries and Kinki Region

Country	National GDP (US\$ billion)	Kinki Region (US\$ billion)
U.S.A.	17,348	974
China	10,431	889
Japan	4,606	798
Germany	3,868	879
France	2,829	879
U.K.	2,989	974
Brazil	2,347	889
Russia	1,861	798
India	2,055	879
Canada	1,785	974
Spain	1,381	889
Australia	1,471	798
Mexico	1,295	879
Korea	1,410	879

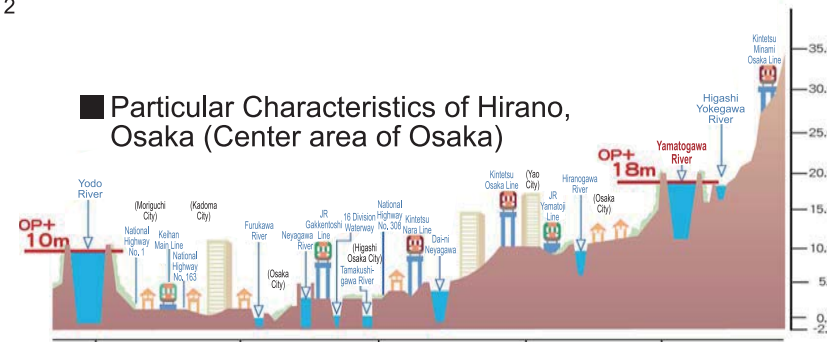
Ministry of Internal Affairs Communications and Statistics Bureau, 2016 World Statistics
 Country Statistics Current 2014; Kinki Current 2012

Distribution of Dense Urban Areas Susceptible to Earthquakes and other natural disasters



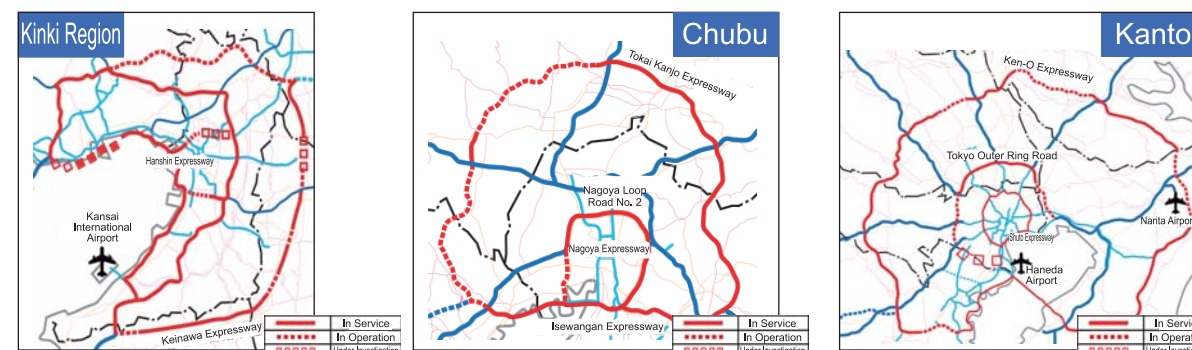
[Osaka] 2,248ha
 [Tokyo] 1,683ha
 Source: Report on Vulnerable Urban Areas (October 12, 2014)

Particular Characteristics of Hirano, Osaka (Center area of Osaka)



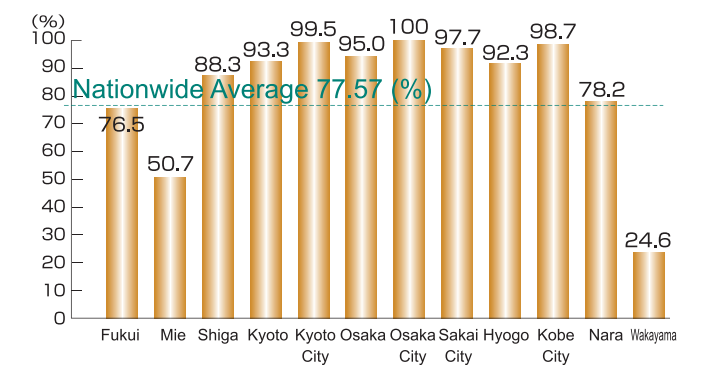
- The Osaka Metropolitan Area is at 0m above sea level and is vulnerable to flood damage
- Yodo River Floods 10m higher than the city level

Metropolitan Area Loop Line Road Maintenance Status



Kinki Region: Maintenance Rate 69%
 Chubu: Maintenance Rate 67%
 Kanto: Maintenance Rate 77%
 Maintenance Rate: Current As April 2016

Penetration Rate of Sewage Processing

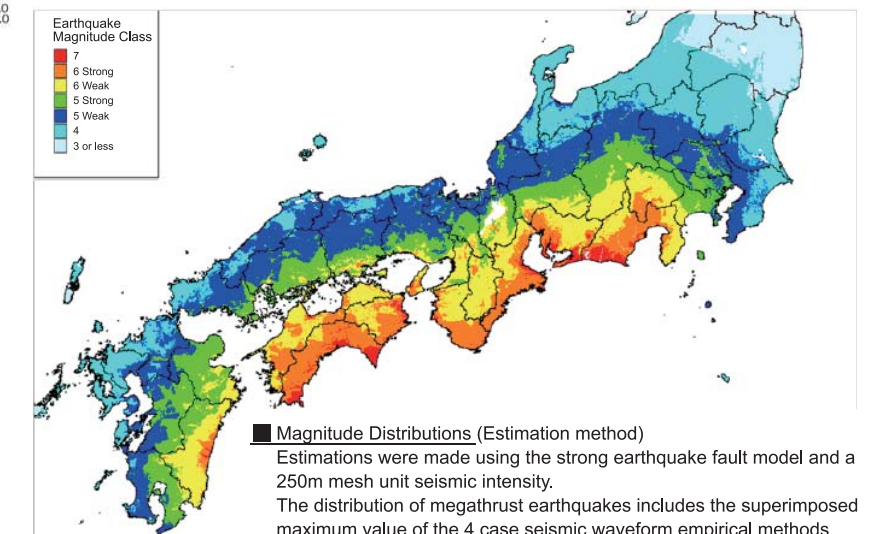


Source: Public Interest Group Japan Sewer Association (Current March 31st, 2015)
 ※ (Nationwide average excludes Fukui)

World Heritage and Intangible Cultural Heritage Distribution



Nankai Trough Megathrust Earthquake Magnitude Distribution



Magnitude Distributions (Estimation method)
 Estimations were made using the strong earthquake fault model and a 250m mesh unit seismic intensity.
 The distribution of megathrust earthquakes includes the superimposed maximum value of the 4 case seismic waveform empirical methods.

Source: Cabinet Office
 Nankai Trough Megathrust Earthquake Model Investigative Commission (Secondary Report)(August 29th, 2012)